



# EnGenius Mesh Router EMR3000

# AGENDA

## Product Overview

- + Product Overview
- + Key selling points
- + Function Introduction
- + Target Market
- + Product Comparison
- + Product Scenario



## Product Overview

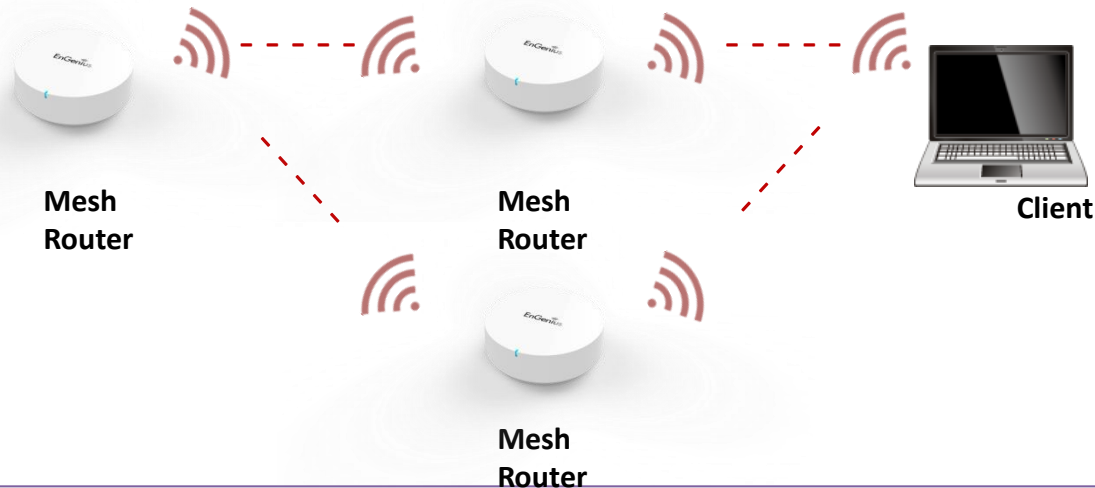
## How to extend WiFi signal coverage?

You will need to extend WiFi coverage when a single Router WiFi signal can not cover your entire home because of distance or interferences.

What is the best choice?

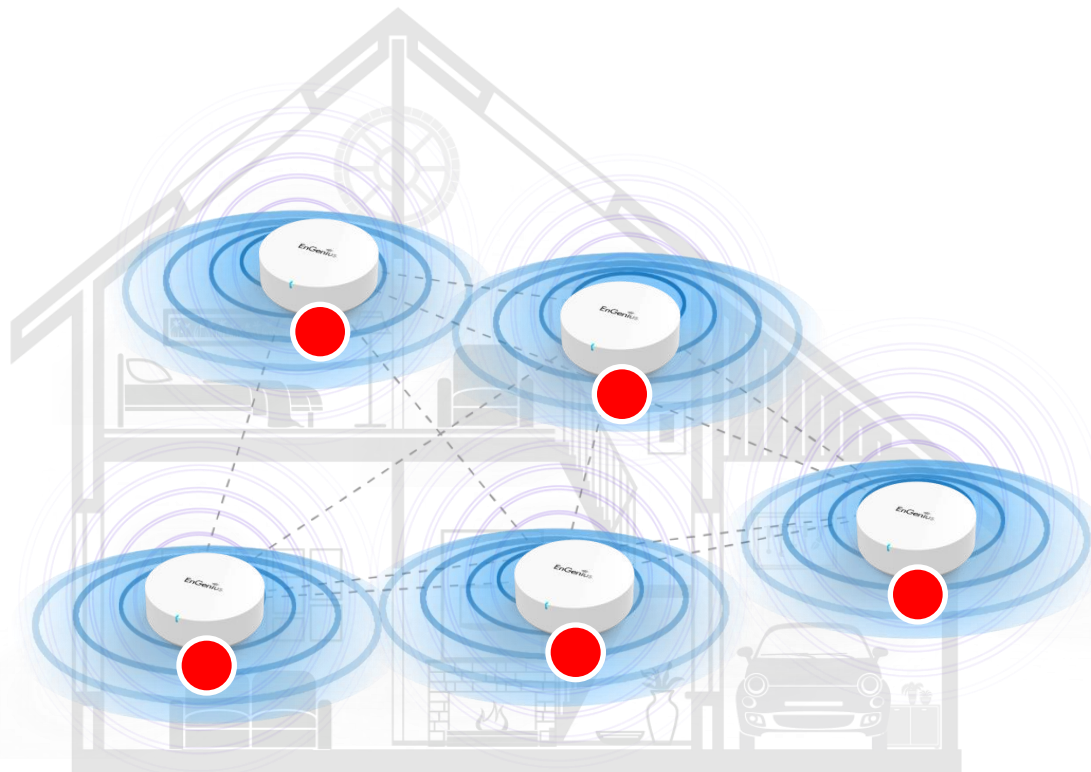


**Repeater network  
Topology**

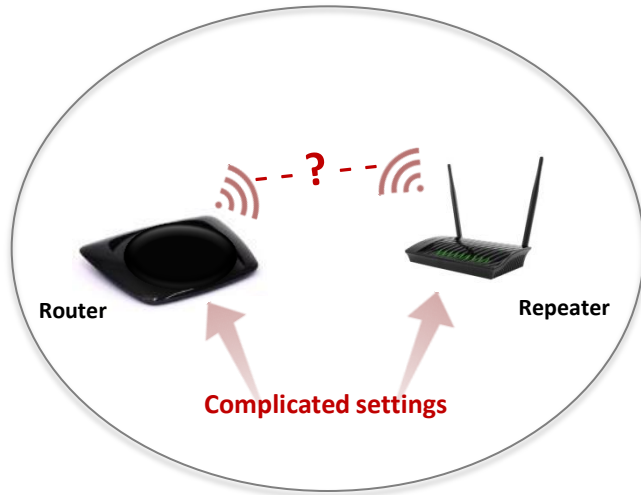


**Mesh network  
Topology**

- ✓ Self Forming - Automatic connecting by same SSID and Password
- ✓ Self Healing – Auto find an alternative present and fix the connection when one node fails.
- ✓ Self Configuring - Optimize solution path for many situations of network system



## Repeater



### Settings:

Repeater has complicated settings to establish the Wi-Fi connection

### Reliability:

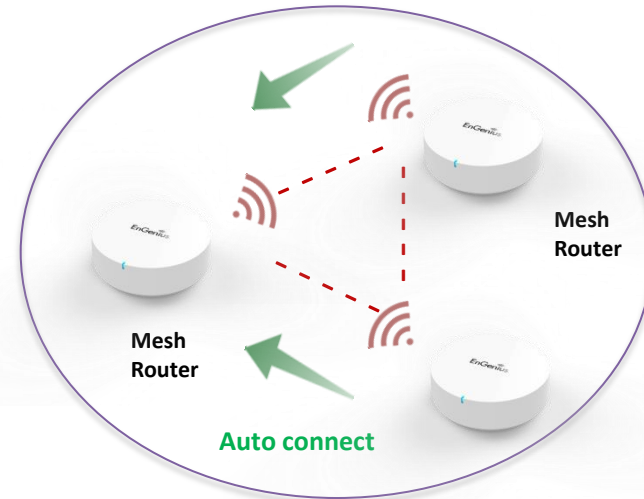
One node signal down, all network will be affected

### Performance:

Network slowed down by over-loaded node

V.S.

## Mesh Network



### Settings:

Easy deployment and one-click configuration  
New Mesh device can auto establish connection

### Reliability:

One node signal down, other Mesh will auto find an alternative present the current connection

### Performance:

Optimal network by Mesh smart routing

EnGenius Mesh Network constructed from wireless technology alleviate a number of roaming challenges from laptops, IP phones, PDAs, and IP base devices, also guarantee the bandwidth of camera's video streaming

- **Simple to deployment** :: Batch configure and save
- **Smart Path Selection** :: Will auto select path with best performance
- **Backup Connection** :: When unit broken, it will auto found another connection path
- **Radio for Application** :: 2.4GHz for AP, and 5GHz for backbone Mesh Network
- **No geographical limitations** :: User can take a handheld or laptop computer anywhere without losing the connection in their home
- **No physical connection required** :: Mobile IP connect automatically and obtain local IP router information
- **Supports security** :: Authentication is performed to ensure that rights are being protected
- **Access Anytime, Anywhere** :: Network access is assured at all times and from all locations. No missed E-mails and increase productivity due to constant connectivity.

Mesh device separate wireless radio to 2 application for AP and MESH, device can working Mesh connection and AP service at the same time.

**Access Point**  
**2.4GHz & 5GHz**  
Dual Band concurrent

Client access  
wireless link on  
2.4GHz and 5GHz



**Mesh Link:**  
**5GHz or 2.4GHz**

Backbone mesh  
connection radio on  
2.4GHz or 5GHz



## Product Briefing

**Category :** Small Business / Home / SOHO

**Model Number :** EMR3000

**Model Description :**

EMR3000: AC1200 Mesh Router



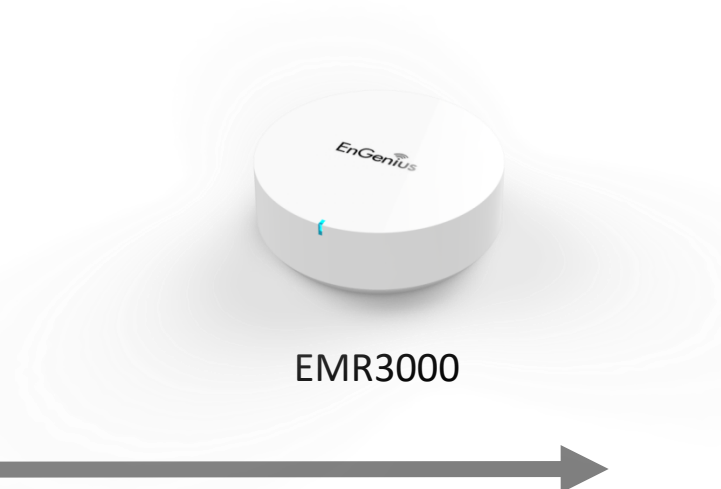
EnGenius AC1200 Mesh Router EMR3000 is a new concept of Dual Band Dual Concurrent Wireless Mesh router. It can be easily deployed and maintained with simple configuration deployment and recovery capacity. It does not need complicated settings. It functions as a Mesh device to extend the signal range eliminating weak or dead spots in your home. Build in high-power Wi-Fi module enables the wider signal coverage to penetrate floors, ceilings and walls for greater connectivity.

Just plug your first EMR3000 into your cable or DSL modem, simply establish Mesh network from your mobile phone APP via few steps. Additional EMR3000 just need power on from the wall outlet and it will auto connect to existing EMR3000 Mesh network, that's all. Enjoy your whole home Wi-Fi network coverage in a minute!!



## EMR3000

- *IEEE 802.11ac standard*
- *Wireless Speed: 300+867Mbps*
- *2.4G/5G Dual concurrent*
- *2 x 10/100/1000 GbE WAN/LAN auto sensing port*
- *Apple white stylish design*
- *1 x Reset Button*
- *1 x USB 2.0 port (for future upgrade)*
- *Parental Control*
- *Guest Network*
- *EnMesh mobile APP*
  - *Easy Mesh network setup*
  - *Internet Speed monitor*
  - *Mesh Network troubleshooting*

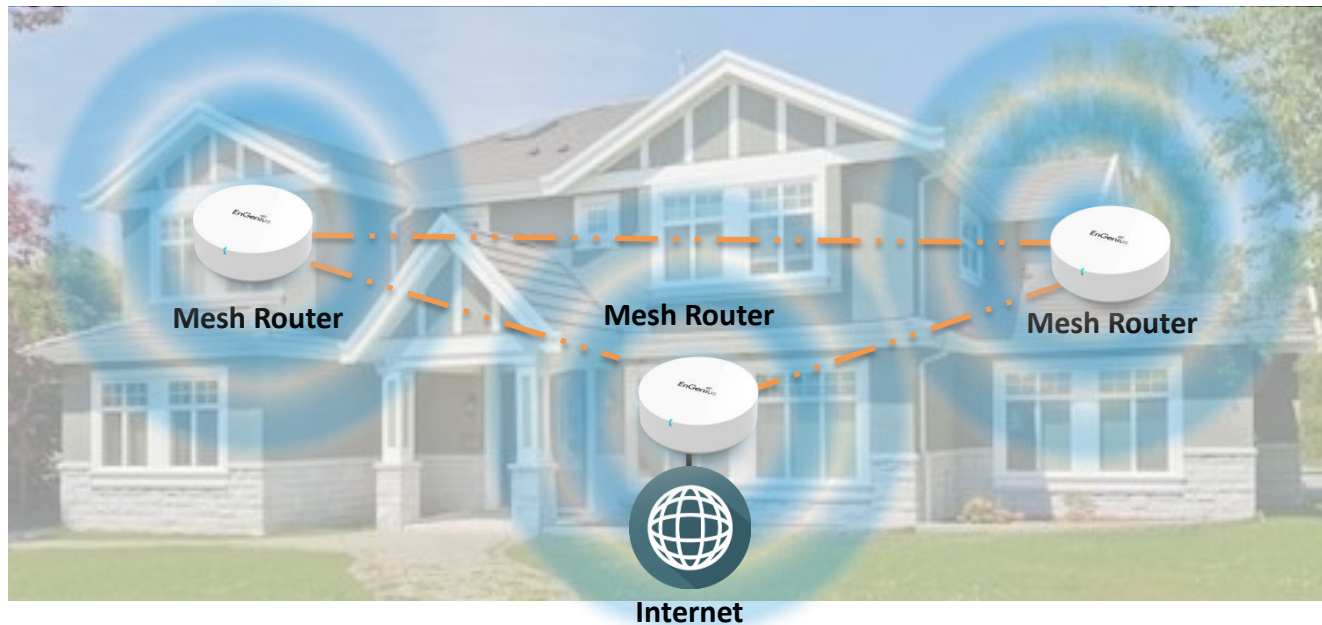




## Key Selling Points

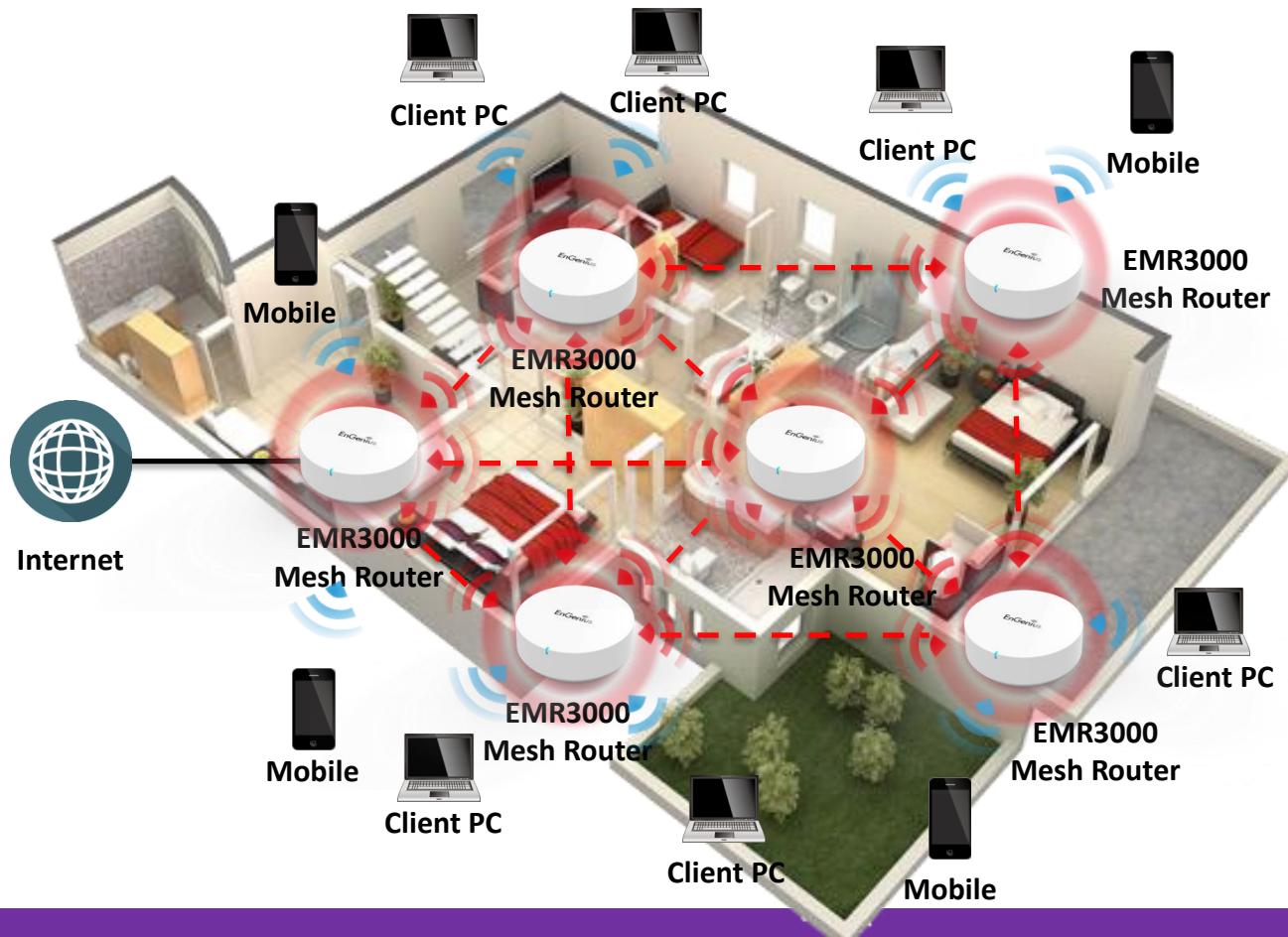
## No more Wi-Fi dead spots in your home

EMR3000 Mesh Router is a high performance Wireless Mesh Router. It extends the Wi-Fi signal range and enables the wider signal coverage to penetrate floors, ceilings and walls for greater connectivity.

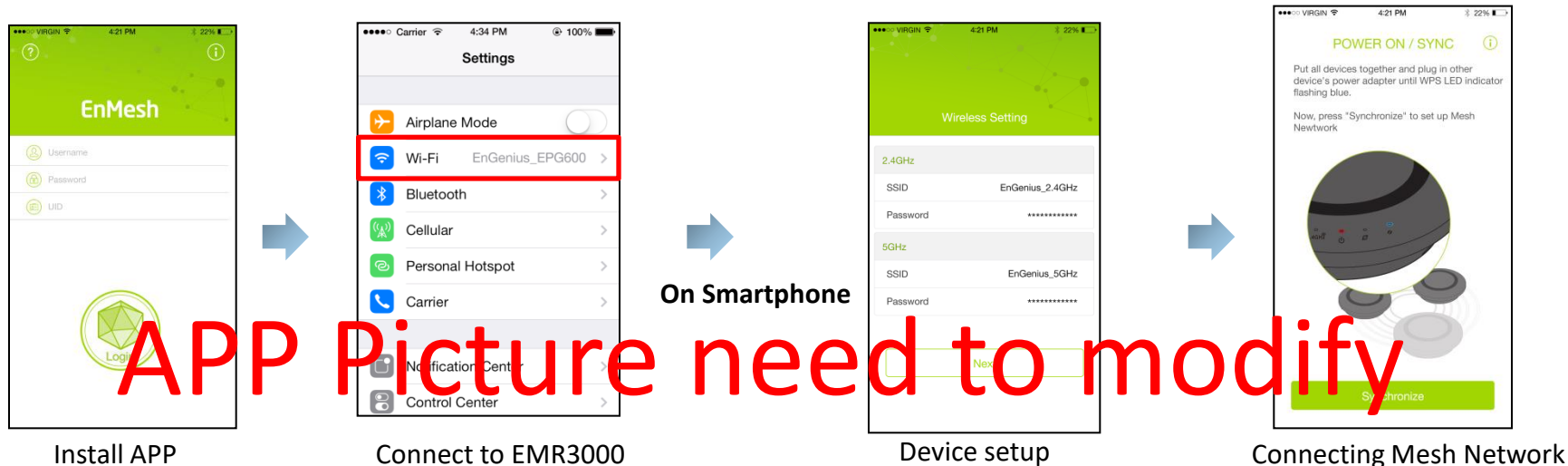


## Ideal for Home Surveillance applications

Wireless Mesh network can be deployed up to 8 Wireless Mesh routers to synchronize varied applications, scalable and flexible extend Wifi network, as well as to reduce cost of cabling.



## Easy setup Mesh network via mobile APP



Search and download the “EnMesh” APP from Apple Store and Google play.

Enter Wi-Fi setting of smartphone and manually connect your smartphone Wi-Fi to EMR3000. Execute the “EnMesh” APP in your smartphone.

Setup the AP SSID/Password setting and Internet setting on EnMesh APP, the APP will auto synchronize the Mesh connection setting with the 1<sup>st</sup> EMR3000.

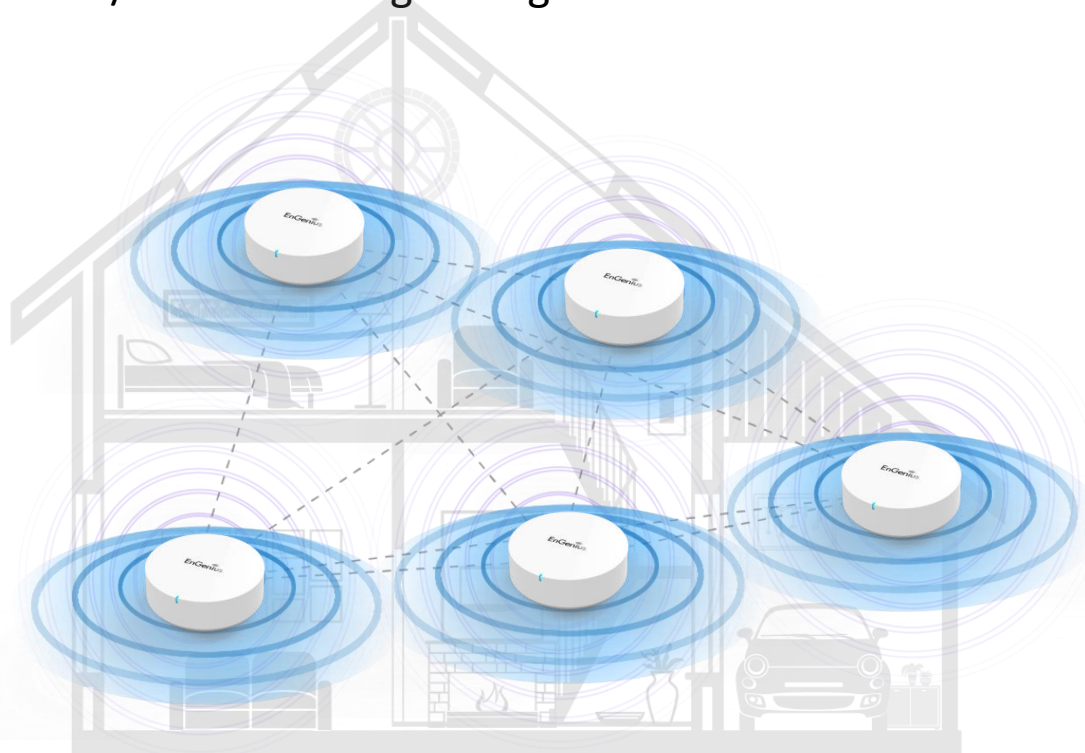
Additional Mesh device (Mesh Router / Mesh camera) will auto connect to your 1<sup>st</sup> EMR3000 when device is just boot up and in the initial setting state.





## Whole home WiFi coverage

For WiFi coverage in Large House, 3 pack bundle is a ideal solution. The best deployment is put EMR3000 on each floor to extend WiFi everywhere. Besides, 3 pack bundle kit provide auto-connection in default setting. Just plug in devices' power cord and wait a few seconds. Bloom!! They will connect together. User only need to set up one device Internet/ WiFi settings to get whole Mesh Network construction.



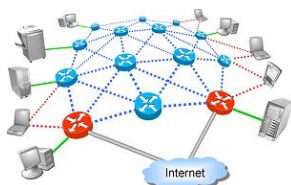
## Easy to connect existing Mesh Network

Except easy set up Mesh Network by EnMesh APP and GUI wizard. It's also easy to join existing the Mesh Network for single Mesh Router. Just plug in all Mesh devices' power cord and click discover button on EnMesh App, all Mesh devices will connect together. That's all set.





## Technology Briefing



Mesh

### **Mesh network is scalable and flexible**

EnGenius Mesh Network provides easily deployed and maintained with mobile APP simple configuration deployment and recovery capacity. Simply establish Mesh network from your mobile phone APP via few steps. It can connect up to 8 nodes of EMR3000 Mesh Routers.



### **Network Turbine**

Built-in Network Turbine technology enables the full bandwidth potential of the router's Internet connection for better media throughput across the home network.

## Technology Briefing



### **Parental Controls**

Schedule times when access to the Internet is permitted and restrict access to websites by URL address and keyword filtering.



### **Guest Network**

A Guest Access login on each band can be set to enable friends or visitors to access the Internet while protecting other networked computers or hard drives in the home that may contain private information.

## Personal Portal Service

EnGenius Mesh Router is distributed with an unique identity (UID) and DDNS Domain with zero charge.

With this exclusive feature, user can easily create their own personal portal. Both user and guest could access, manager and share multimedia contents with different authority .

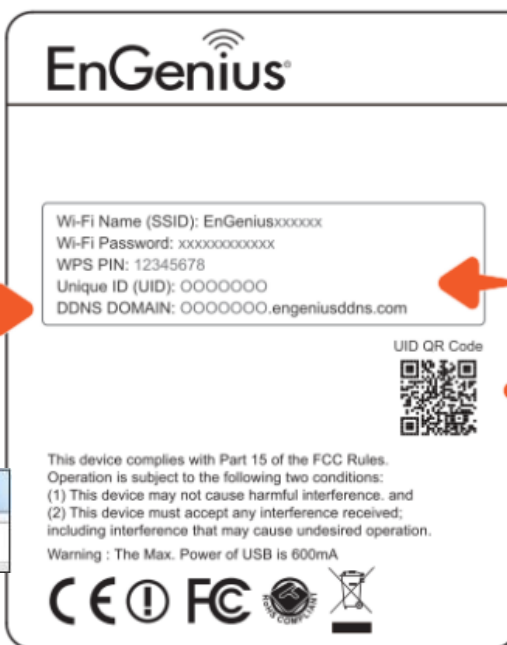
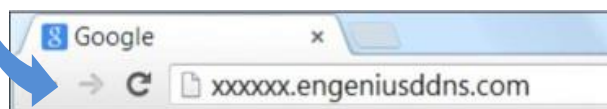
### EnGenius DDNS Service

For Web service login

DDNS DOMAIN:

XXXXXX.engeniusddns.com

DDNS Domain



Unique ID (UID)  
"000000"

UID QR Code

### EnGenius UID Service

For APP login

Unique ID (UID):

XXXXXX

### EnGenius UID QR code

For APP login

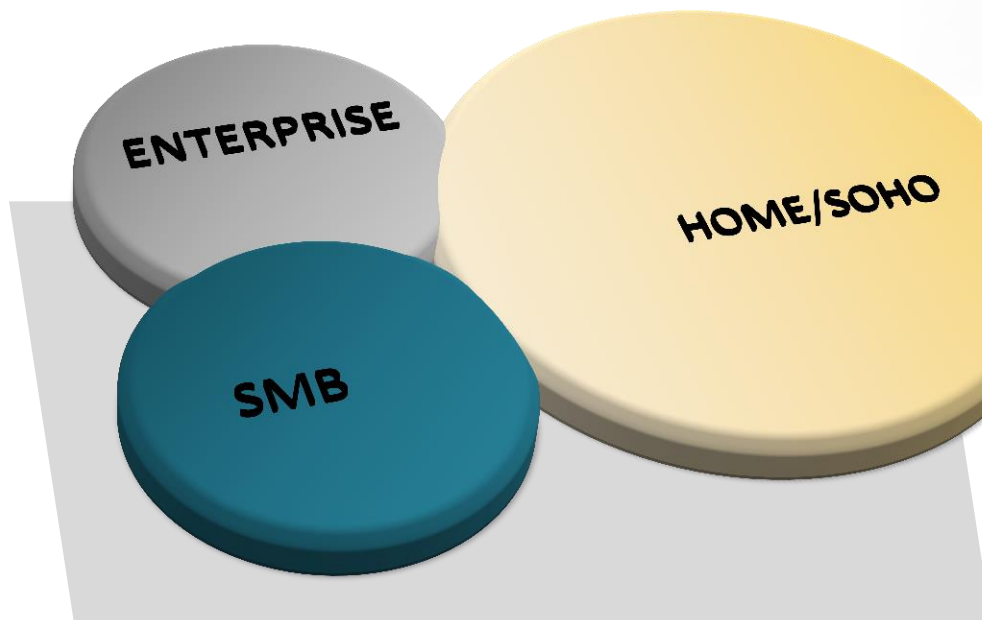




Target Market

## Target Market

- Small Office
- SOHO User (Need Powerful coverage solution)
- Home User (looking for simple Wi-Fi coverage solution)



AC1200 Wireless Speed  
EnMesh APP easy Mesh setup  
Whole home Wi-Fi Coverage  
Parental Control

## Product Comparison

Brand	EnGenius EMR3000	Google Wifi	EERO	Luma	Ubiquiti Amplifi
Photo					
Price (1pc)	TBD	\$129	\$199	N/A	N/A
Price (2pcs)	TBD	N/A	\$349	N/A	N/A
Price (3pcs)	TBD	\$299	\$499	\$399	\$199
Wi-Fi	802.11 a/ b/g/n/ac	802.11 a/ b/g/n/ac	802.11 a/ b/g/n/ac	802.11 a/ b/g/n/ac	802.11 a/b/g/n/ac
Frequency	2.4 GHz / 5 GHz	2.4 GHz / 5 GHz	2.4 GHz / 5 GHz	2.4 GHz / 5 GHz	2.4 GHz / 5 GHz
Radio	2 x 2	2 x 2 wave 2	2x2	N/A	2x2
Bluetooth	For Easy Setup	Bluetooth Smart Ready	BLE 4.0	BLE 4.0	For Easy Setup
Display	N/A	N/A	N/A	N/A	Touch Panel LCD
Physical Interface					
Dimensions	127 x 127 x 47mm	107 x 107 x 69 mm	121 x 121 x 34mm	117 x 105 x 30mm	N/A
Ethernet port	2 (Auto WAN detect)	1 WAN 1 LAN	2 (Auto WAN detect)	1 WAN 1 LAN	1 WAN 4 LAN
USB	USB 2.0 x 1	N/A	USB 2.0 x 1	USB 2.0 x 1	USB 2.0 x 1

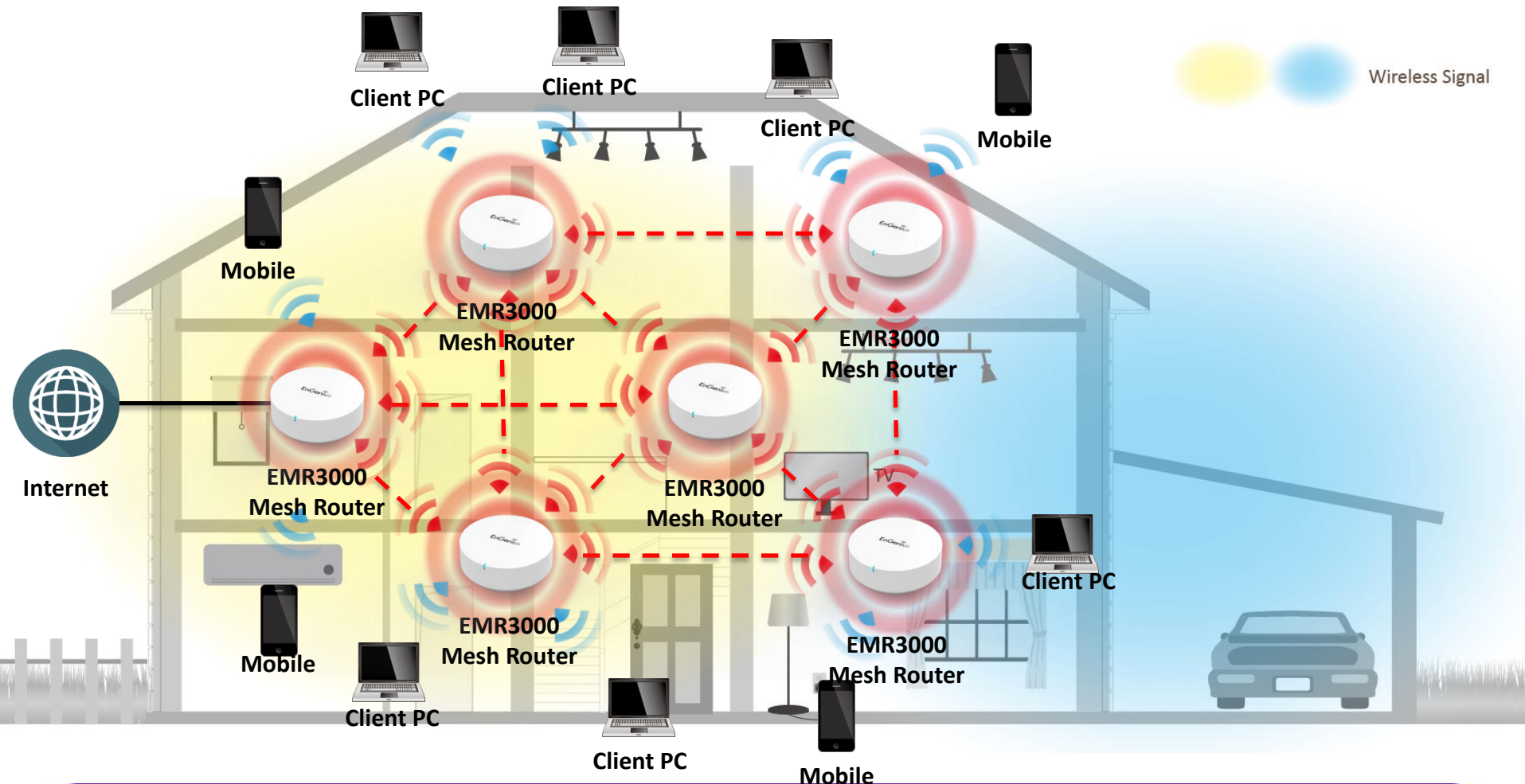


## Product Scenario



# Home

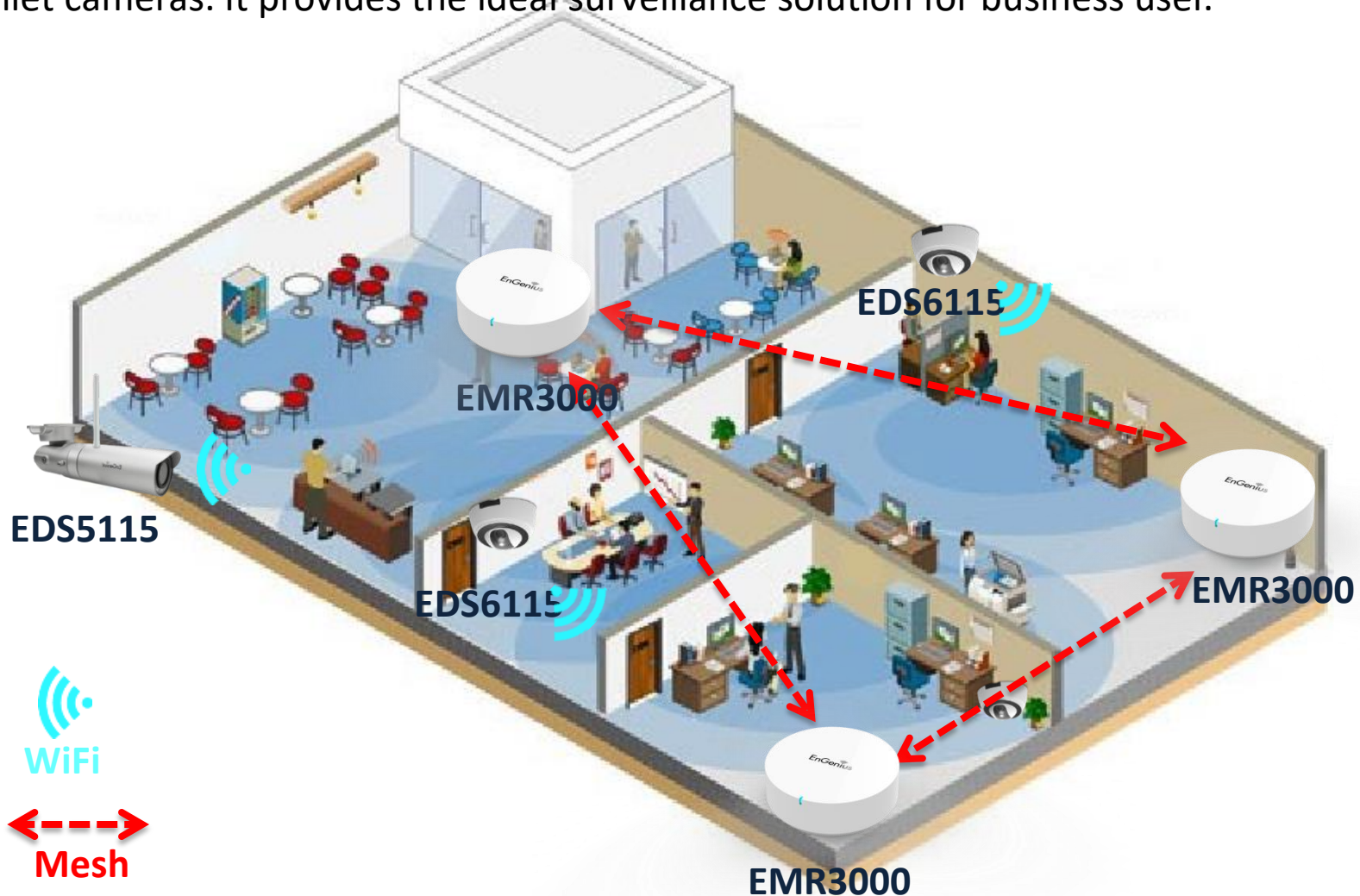
Mesh Router for the backbone mesh network, also combine with other Mesh Router nodes. It extends the wireless signal to whole home coverage and no more Wi-Fi dead spot in the home.





## Office

Mesh Router for the backbone mesh network, also combine with other wireless dome and bullet cameras. It provides the ideal surveillance solution for business user.





Total Networking Solution Provider